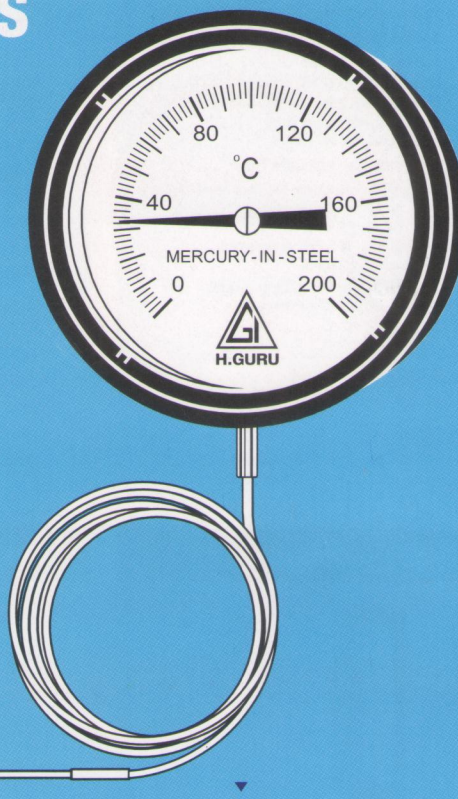
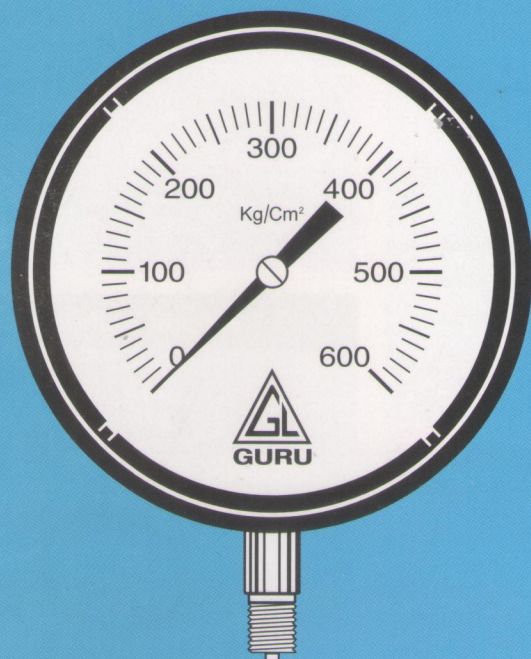




**CAUTION**  
BEWARE OF IMITATION FOR GENUINE PRODUCT.  
SEE OUR HOLOGRAM ON THE PRODUCT.



# PRESSURE & TEMPERATURE MEASURING INSTRUMENTS



PRODUCT ABSTRACT AND BASIC SPECIFICATIONS

## Bourdon Type Pressure Vacuum & Compound Gauge

### 1. PRESSED STEEL PRESSURE GAUGE

Dial Size : 50, 63, 100 & 150 mm. Connection : 3/8" BSP.  
Bourdon, Movement & Block: Non-Ferrous. Range : 1Kg/cm<sup>2</sup> to 600 Kg/cm<sup>2</sup> with PSI Scale.  
Accuracy : ± 2%, Pressed Steel Case & Cover. -760 mmhg (Vacuum) & Compound Range.

### 2. DUST & DAMP PROOF PRESSURE GAUGE

Dial Size : 100 & 150 mm. Connection : 3/8" BSP.  
Bourdon, Movement & Block: Non-Ferrous. Mounting : Projection / Direct with bottom entry  
Accuracy : ± 1% Cast Aluminium Case with Range : 1Kg/cm<sup>2</sup> to 250 Kg/cm<sup>2</sup> with PSI Scale.  
Screwed Inner bezel of ABS Plastic. -760 mmhg (Vacuum) & Compound Range.

### 3. CAST ALUMINIUM WEATHER-PROOF PRESSURE GAUGE

Dial Size : 100, 150 & 250 mm. Connection : 3/8" BSP, 1/2" NPT, 1/2" BSP (M).  
Bourdon : Non-Ferrous/SS 316 Mounting : Direct / Projection with bottom entry  
Movement: Non-Ferrous/SS 304 & Flush Panel with back entry  
Block : Extruded Brass/SS 316 Range : 0-1, 2, 4, 6, 7, 10, 14, 16, 21, 28, 42, 60, 70,  
Accuracy : ± 1%, 0.5%, Micro Zero Adjustment 100, 160, 200, 250, 400, 600, 1000 Kg/cm<sup>2</sup>;  
Pointer & Blow out disc. -760 mmhg & Compound Range,  
Case : Cast Aluminium weather proof with Hydraulic in Ton  
Screwed Inner bezel of ABS Plastic.

### 4. OTHER BOURDON TYPE GAUGES

Ammonia, Freon, Oxygen, Acetylene & Depth Gauges.

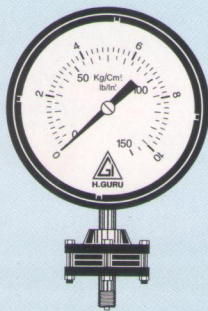
### 5. ACCESSORIES

Single & Double Electric Contact, Syphon, Gauge cock, Snubbers and Glycerine Filling.

## Mercury in-steel Thermometer

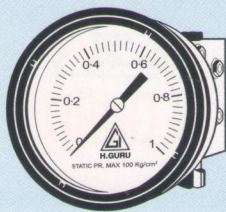
TYPES : Rigid Stem & Distance (Capillary)  
DIAL SIZE : 100, 150 & 250mm.  
ACCURACY : ± 1% of range span.  
AMBIENT COMPENSATION : With Bi-Metal  
BULB STEM & CONNECTION : Mild Steel or SS 316 Material.  
BOURDON MATERIALS : Alloy Steel or Stainless Steel.  
CASE & BEZEL : Cast Aluminium, Stove Enamelled Black  
Weather proof with inner screwed type  
ABS Plastic Bezel.  
BULB DIA : 16 mm (Standard), 12 (On request)  
STEM DIA : 9 mm.  
IMMERSION LENGTH : Adjustable up to 300 mm.  
CAPILLARY : Copper, PVC on Copper, Stainless Steel,  
3 Meters Standard (Maximum 15 Meters)  
CONNECTION : 3/4" BSP (M), others on request.  
MOUNTING : 1). Vertical (Bottom Entry) & Horizontal  
(Back Entry) with Adjustable union for  
Rigid Stem Type  
2). Panel (Surface) with Bottom Entry & Flush  
Panel Back Entry with Adjustable union for  
Distance (Capillary) Type  
RANGES (°C) : -38+50, 50, 100, 120, 150, 200, 250,  
300, 400, 500 & 600 °C.  
ACCESSORIES : Anti-vibration Spring, Single & Double Electric  
Contact & Thermowell.

## Sealed Diaphragm Gauge



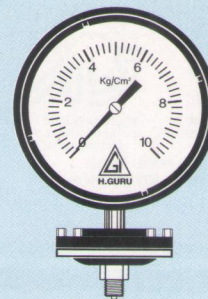
DIAL SIZE	: 100 & 150 mm.
ACCURACY	: ± 1% of Full Scale.
CASE & BEZEL	: Die Cast Aluminium Weather proof Case as per ISA-RP 8, 1-2B, Stove Enamelled Black with Screwed Type Inner Bezel made of ABS Plastic. Optional: Epoxy Grey Painting & Stainless Steel.
BOURDON	: Non-Ferrous, AISI 316 SS.
MOVEMENT	: Brass and AISI 304 SS.
BLOCK	: Brass and AISI 316 SS.
MOUNTING	: Projection with Bottom Entry. Direct on sealed unit with bottom entry, Flush Panel with back entry.
POINTER	: Micrometer Zero Adjustable Type
CAPILLARY STANDARD RANGES	: 3.5 mm OD Solid Drawn Stainless Steel Capillary
RANGES	: 0 -1, 1-6, 2, 2.5, 4, 6, 10, 16, 25, 40, 60, 100, 160, 250, 400, 600 Kg/cm <sup>2</sup> , Vacuum & Compound.
TEMPERATURE	: Upto 150 °C with Silicon Oil as Sealing medium and 300 °C with mercury.
DIAPHRAGM MATERIAL	: AISI 316 SS.
DIAPHRAGM PROTECTION	: Teflon Coating (Optional).
TOP CHAMBER	: SS 304.
BOTTOM CHAMBER	: SS 316.
CONNECTION	: 1/2" BSP & 1/2" NPT (M) Optional - flange as per BS, ASA & DIN Standard.

## Differential Pressure Gauge



DIAL SIZE	: 150 mm.
STANDARD RANGES	: 0 -400, 600, 1000, 1600, 2500, 4000 and 6000 mmwc, 0-0.6, 1, 1.6, 2, 2.5, 4, 6, 10, 16 & 25 bar / Kg/cm <sup>2</sup> .
PROCESS CONNECTION	: 1/4" NPT (Female) Standard. Other connection are available with adaptor.
ACCURACY	: ± 1.5% of range span.
MAX. STATIC PRESSURE	: 100 bar / Kg/cm <sup>2</sup> .
SENSING ELEMENT	: Diaphragm of SS 316 upto 2.5 bar / Kg/cm <sup>2</sup> ; Above 2.5 bar / Kg/cm <sup>2</sup> Diaphragm is of alloy steel.
CHAMBER MATERIAL	: AISI 304 SS.
MOUNTING	: Direct with Bottom Entry. Flush Panel with Bottom Entry/Back Entry.
STANDARD FITMENT	: 1). Over Range Relief Valve 2). External Zero Adjustment.
ACCESSORIES AVAILABLE	: * Electric Contact * Adjustable Pulsation Dampner * Gauge Cock * Syphon * Capillary * Sealed Separator (in this case no equalizer valve is provided) * Three way manifold made of SS 304 / 316.

## Schaffers Diaphragm & Capsule Gauge



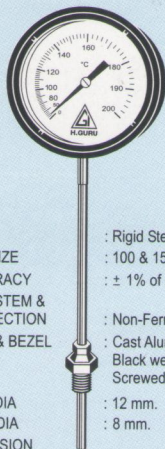
DIAL SIZE	: 100 & 150 mm.
ACCURACY	: ± 1.5% of range span.
SENSING ELEMENT	: Spring Steel / Stainless Steel Diaphragm
DIAPHRAGM PROTECTION	: Teflon, Silver Foil (for chlorine) Stainless Steel
MOVEMENT	: Non Ferrous / Stainless Steel.
TOP CHAMBER	: Cast Aluminium / Cast Iron.
BOTTOM CHAMBER	: Cast Iron, SS 304 / 316 AISI.
CASE	: Cast Aluminium / Cast Iron, Weather proof Stove Enamelled Black with Screwed Bezel.
CONNECTION	: 1/2" BSP (M).
MOUNTING	: Direct with Bottom / Back Entry.
RANGE	: 1, 2, 4, 7, 10, 14, 16, 21, 25 Kg/cm <sup>2</sup> , -760 mmhg & Compound -1 + 25 Kg/cm <sup>2</sup> .
CAPSULE	: (Low Pressure range): 100, 250, 400, 600, 1000, 1600, 2000, 2500, 4000, 6000 mmwc.

## Draught Gauge



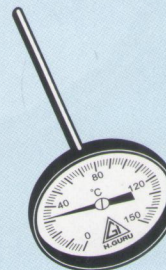
DIAL SIZE	: 150 x 78 mm & 200 x 104 mm.
SENSING ELEMENT	: Non-Ferrous / SS Capsule.
ACCURACY	: ± 1%.
MOVEMENT	: Brass.
BLOCK	: Brass / SS 316.
CASE	: Fabricated Steel, Stove Enamelled Black
CONNECTION	: 1/4" BSP (M).
MOUNTING	: Flush Panel Back Entry.
DIAL ORIENTATION	: Vertical / Horizontal.
RANGE	: For pressure 0-6000 mmwc upto 0-25 mmwc For Suction -6000 mmwc to 0, upto-25 mmwc to 0. For Compound -300 mm to +300 mmwc upto -15 +15 mmwc.

## Vapour Pressure Thermometer



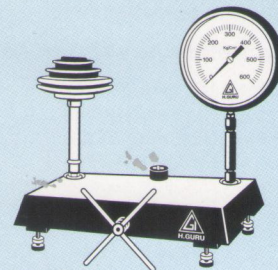
TYPE	: Rigid Stem & Distance (Capillary)
DIAL SIZE	: 100 & 150 mm.
ACCURACY	: ± 1% of range span. Between 30 -100 %.
BULB STEM & CONNECTION	: Non-Ferrous and Stainless Steel.
CASE & BEZEL	: Cast Aluminium Stove Enamelled Black weather proof case with inner Screwed Type ABS Plastic Bezel.
BULB DIA	: 12 mm.
STEM DIA	: 8 mm.
IMMERSION LENGTH	: Adjustable upto 250 mm.
CONNECTION	: 1/2" BSP (M)
CAPILLARY	: Copper Capillary with PVC Sheath Standard Length 3 Meters.
MOUNTING	: See Mercury in Steel Thermometers Specification Column.
RANGE (°C)	: -10 +65 °C, 0-65, 100, 120, 150, 200, 260, 300, 340 °C.

## Bimetal Thermometer



TYPES	: Horizontal & Vertical.
DIAL SIZE	: 50, 63, 100 & 150 mm.
ACCURACY	: ± 1% of range span.
STEM & CONNECTION	: Non-Ferrous and Stainless Steel.
CASE	: Cast Aluminium.
STEM DIA	: 9 mm.
IMMERSION LENGTH	: 150 mm (Standard).
CONNECTION	: 1/2" BSP (M).
MOUNTING	: 1). Horizontal with back entry. 2). Vertical with bottom entry.
RANGE (°C)	: -50 +50, 50, 100, 120, 150, 200, 250, 300, 400, 500°C.

## Hydraulic & Dead Weight Gauge Tester



1). PRESSURE GAUGE TESTERS	: Upto 1000 Kg./Cm <sup>2</sup> .
2). VACUUM & COMPOUND GAUGE TESTERS	: -760 mmhg to 10 Kg./Cm <sup>2</sup> .
3). MERCURY COLUMN MANOMETERS	: -760 mmhg to 0.
4). DEAD WEIGHT TESTERS	: 10, 100, 600 & 1000 Kg./Cm <sup>2</sup> .

### H.GURU

H.Guru is the largest manufacturer of pressure and temperature gauges in India. With its extensive research & development programme, H.Guru has successfully introduced correctly constructed pressure gauges to record finest change in pressure. The ruggedly engineered gauge ensures top quality performance with highest safety standards. Modified Design provides durable life - span and economical use comparable with any other make.

The wide range of gauges cover requirements of any application and to operate accurately on specified application offering full watch in line where critical pressure maintenance is important. The sturdy design and accuracy automatically gets the approval from most of the consultants and engineers of various industries.