



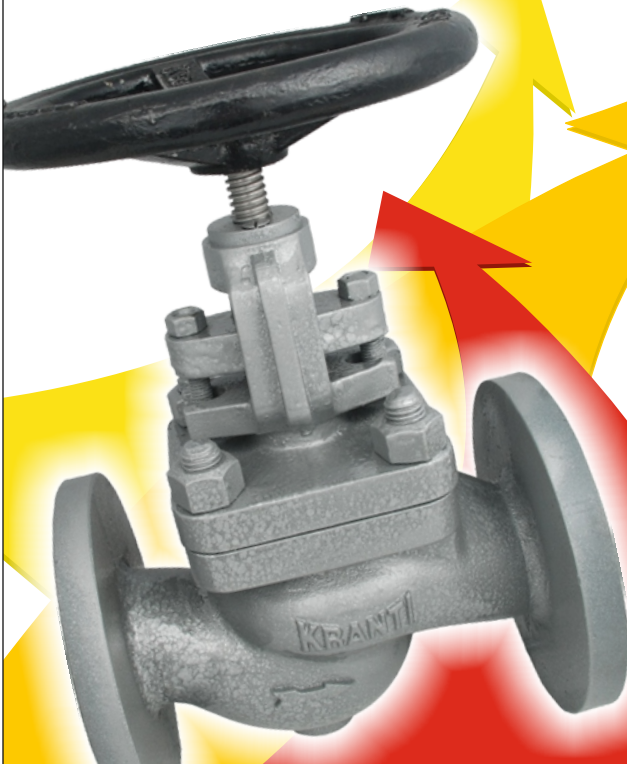
ISI Marked Class-A & Class-B Water Meters
as per IS: 779 / 1994 Conforming to **ISO 4064**
Standard for Cold Water Meters

Electromagnetic flow meters for water &
waste water applications

IBR Certified Cast Iron & Cast Steel
Valves & Boiler Mountings

ISI Marked Cast Iron Ball Valves, Cast Iron
Butterfly valves, Cast Iron Sluice Valves
& Cast Iron Reflux Valves

Cast Iron Industrial Valves





IS:779/1994
CLASS - B
 CM/LNO. 1298460

KRANTI®
WATER METER
 AN ISO 9001:2008 & 14001 : 2004 CO.

Multi Jet Magnetic Water Meter

Besto Series with German Technology

with two years warranty

Features

- Only one moving part - the impeller - in contact with the water for minimum wear and utmost reliability.
- Magnetically driven sealed Register unconditionally guaranteed against fogging.



Applications : For domestic, agriculture and industrial use

available Sizes : 1/2" - 2" (15mm to 50mm)

Standards : IS : 779/1994, ISO 4064

Technical Specification :

Maximum Working Pressure

16 Bar

Maximum Working Temperature

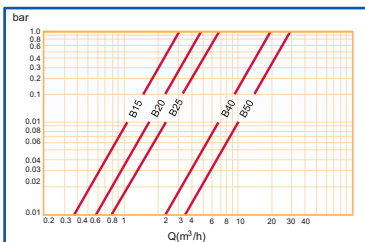
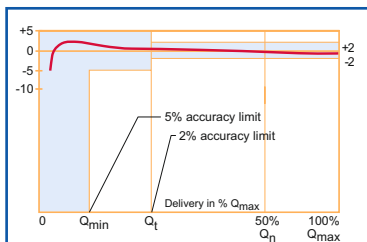
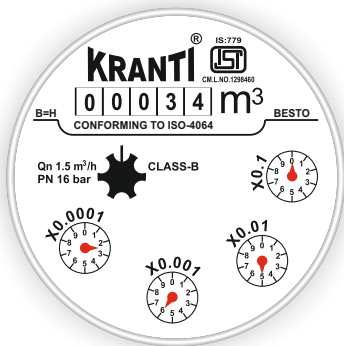
50°C

Body

Corrosion Proof Copper Alloy

Coupling Threads

BSP





IS:779/1994
ISI
 CLASS - A & B
 CM/LNO. 1298460

KRANTI
WATER METER
 AN ISO 9001:2008 & 14001 : 2004 CO.

Class-A & Class-B Water Meters

Meters are ISI Marked Dry Dial Inferential type Straight reading size 15, 20, 25, 40 & 50 conforming to Class-A & Class-B of IS : 779/1994 & ISO 4064 Standards of Water Meters. Their parts are made of selected material of high accuracy, long duration and ensured by perfect machining with modern and high precision equipment in our plant.



DIMENSIONS

The dimensions unit in mm

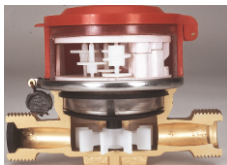
Meter Size	Length Including Nipple width (Max)		Height (Max)	Min. Registration in Lts.		Max. Recording in Kilo-Litres
	A	B		Class-A	Class-B	
15	250	100	H ₁ .50-H ₂ .180	0.1	0.1	99999
20	290	130	H ₁ .60-H ₂ .240	0.1	0.1	99999
25	380	170	H ₁ .65-H ₂ .260	0.1	0.1	99999
40	430	210	H ₁ .75-H ₂ .300	1	1	999999
50	470	270	H ₁ .115-H ₂ .300	1	1	999999

METER PERFORMANCE DATA

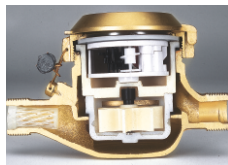
Meter Size	Max. Flow Rate Q _{max} KL/Hr.	Normal Flow Rate on KL/Hr.	Transitional Flow Rate Qt L/Hr.		Min. Starting Flow Rate Q _{min} L/Hr.		Metering Accuracy	
			Class-A	Class-B	Class-A	Class-B	In the lower region of flow Q _{min} in (inclusive) to Qt (inclusive)	In the upper region of flow Q _{min} in (inclusive) to Qt (inclusive)
15	3	1.5	150	120	60	30	±5%	±2%
20	5	2.5	250	200	100	50	±5%	±2%
25	7	3.5	350	280	140	70	±5%	±2%
40	20	10	1000	800	400	200	±5%	±2%
50	30	15	1500	1200	600	300	±5%	±2%



Class-A Multijet

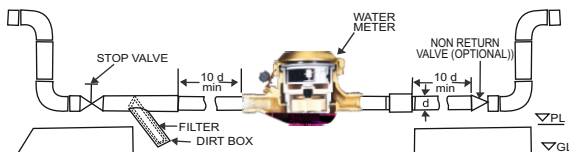


Class-B Singlejet



Class-B Multijet

Installation Instruction

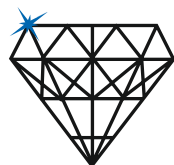


d=nominal size of water meter

Fig Positioning of W.M.



PARAS



PARAS

ELECTROMAGNETIC FLOW METERS

The Paras make **Electromagnetic Flow Meters** called as **Mastermag** are used to measure with precision-the flow rate of liquids, slurries & pastes with an electrical conductivity of atleast $5\mu\text{S/cm}$.

Electromagnetic Flow Meters are the best metering solution when fast response and accurate measurements are required without obstructing the pipe; moreover not having any moving parts they are maintenance free.



APPLICATIONS

1. Effluent Treatment Plants.
 2. Sewage Treatment Plants.
 3. Water Supply Schemes.
 4. Steel & Aluminium.
 5. Sugar Industries & Distilleries
 6. Pulp & Paper.
 7. Chemical & Pharmaceutical.
 8. Petrochemicals & Fertilizers.
 9. Food & Drugs.
 10. Textile Industries
 11. Marine operations
 12. Power Plants
- many more

PRINCIPAL OF OPERATION

The method of flow measurement is based of **Faraday's law** of electromagnetic induction. When a conductor moves within a magnetic field voltage is induced in it which is proportional to the velocity of conductor.

In this case the conductor is flowing media. The equation is as below.

$$E = B \cdot v \cdot D.$$

E = Induced voltage

[proportional to velocity]

B = Magnetic flux density (Constant)

v = Mean velocity of the media

D = Distance between the sensing electrodes (Constant)

Specifications - Sensors

Mastermag sensors are available in flanged / sandwich format and offer a wide choice of lining & electrode materials to satisfy all applications.

Sizes: DN 10 to DN 1000, **Metering Tube :** Stainless Steel,

Lining : PTFE / Neoprene / Soft Rubber / Hard Rubber / PFA

Electrodes : S.S. 316 / Hastelloy "C" / Titanium / Tantalum / Platinum

Process Connections : ANSI / DIN / BS10 / UNI / BS 4504 Flanges

Temperature : PTFE Lining (0-150°C Max.) , Rubber Lining (0-90°C Max.)

Specifications - Transmitters

Type : Microprocessor based, **Flow Velocity Range :** 0.5 m/s to 12 m/s

LED Display : 4 digit for flow rate indication & 9 digit for totalized quantity.

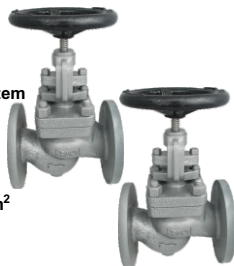
Accuracy : $\pm 0.5\%$, **Repeatability :** $\pm 0.2\%$, **Signal Output :** 4-20 mA isolated

Power Supply : 230 V AC / 110 V AC, 50 Hz / 24 V DC

(WITH TEST CERTIFICATE IN FORM III-C)

Model No. : PV-101A

Product Name : Cast Iron Globe Valve
Cast Iron Stop & Non Return Valve
Product Standard : BS 5152 / Din 86251
Product Description : Outside Screw & Yoke type Rising Stem
Body & Bonnet : Cast Iron as per IBR 86 to 93 Gr. A
Type of seat & Disc : Renewable
Trim : Stainless Steel (AISI 410)
Pressure Rating : PN 16
Hydraulic Test Pressure : Body 26 Kg/cm², Seat 17.3 Kg/cm²
Working Pressure : Max. BOP 13 Kg/cm²
Working Temperature : Max. 220°C
End details : Flanged ends as per DIN 2533 Raised Face



Model No. : PV-102

Product Name : Cast Iron Right Angle Globe Valve
Cast Iron Stop & Non Return Valve Angle Type
Product Standard : BS 5152 / Din 86251
Product Description : Outside Screw & Yoke type Rising Stem
Body & Bonnet : Cast Iron as per IBR 86 to 93 Gr. A
Type of seat & Disc : Renewable
Trim : Stainless Steel (AISI 410)
Pressure Rating : PN 16
Hydraulic Test Pressure : Body 26 Kg/cm², Seat 17.3 Kg/cm²
Working Pressure : Max. BOP 13 Kg/cm²
Working Temperature : Max. 220°C
End details : Flanged ends as per DIN 2533 Raised Face



Model No. : PV-103

Product Name : Cast Iron Horizontal Lift Check Valve
Product Standard : BS 5153
Product Description : Bolted Cover
Body & Bonnet : Cast Iron as per IBR 86 to 93 Gr. A
Type of seat & Disc : Renewable
Trim : Stainless Steel (AISI 410)
Pressure Rating : PN 16
Hydraulic Test Pressure : Body 26 Kg/cm², Seat 17.3 Kg/cm²
Working Pressure : Max. BOP 13 Kg/cm²
Working Temperature : Max. 220°C
End details : Flanged ends as per DIN 2533 Raised Face



Model No. : PV-104

Product Name : Cast Iron Horizontal Lift Check Valve
Product Standard : BS 5153
Product Description : Bolted Cover, Right Angle Pattern
Body & Bonnet : Cast Iron as per IBR 86 to 93 Gr. A
Type of seat & Disc : Renewable
Trim : Stainless Steel (AISI 410)
Pressure Rating : PN 16
Hydraulic Test Pressure : Body 26 Kg/cm², Seat 17.3 Kg/cm²
Working Pressure : Max. BOP 13 Kg/cm²
Working Temperature : Max. 220°C
End details : Flanged ends as per DIN 2533 Raised Face



(WITH TEST CERTIFICATE IN FORM III-C)

Model No. : PV-105

Product Name : Cast Iron Accessible feed Check valve

Product Description : With Straight & Curved Inlet

Type of seat & Disc : Renewable

Trim : Stainless Steel (AISI 410)

Pressure Rating : PN 10

Hydraulic Test Pressure : Body 21 Kg/cm², Seat 14 Kg/cm²

Working Pressure : Max. BOP 10.54 Kg/cm²

Working Temperature : Max. 220°C

End details : Flanged ends as per BS 10 Table F, Flat Face



Model No. : PV-106

Product Name : Cast Iron Swing Check Valve

Product Standard : BS 5153

Product Description : Bolted Cover

Type of seat & Disc : Renewable

Trim : Stainless Steel (AISI 410)

Pressure Rating : Class 125

Hydraulic Test Pressure : Body 21 Kg/cm², Seat 14 Kg/cm²

Working Pressure : Max. BOP 10.54 Kg/cm²

Working Temperature : Max. 220°C

End details : Flanged ends as per ANSI B 16.1 Flat Face



Model No. : PV-107

Product Name : Cast Iron "Y" Type Strainer

Product Description : Screwed in Bonnet

Body & Cover : Cast Iron as per IBR 86 to 93 Gr. A

Strainer : Perforated Stainless Steel as per AISI 304

Pressure Rating : PN 10

Hydraulic Test Pressure : Body 26 Kg/cm²

Working Pressure : Max. BOP 13 Kg/cm²

Working Temperature : Max. 220°C

End details : Screwed Female Ends



Model No. : PV-108

Product Name : Cast Iron "Y" Type Strainer

Product Description : Bolted Bonnet

Body & Cover : Cast Iron as per IBR 86 to 93 Gr. A

Strainer : Perforated Stainless Steel as per AISI 304

Drain Plug : Carbon Steel as per IS 1367

Pressure Rating : PN 10

Hydraulic Test Pressure : Body 21 Kg/cm²

Working Pressure : Max. BOP 10.55 Kg/cm²

Working Temperature : Max. 220°C

End details : Flanged Ends Table 'F'



CAST STEEL
VALVES & BOILER
MOUNTINGS

KRANTI

IBR
APPROVED

KRANTI
VALVES
AN ISO 9001:2008 CERTIFIED COMPANY

(WITH TEST CERTIFICATE IN FORM III-C)

Model No. : PV-201

Product Name : Cast Steel Globe Valve
Product Standard : BS 5160 / DIN 2401
Product Description : Outside Screw & Yoke type Rising Stem
Body & Bonnet : Cast Steel as per ASTM A 216 Gr. WCB
Type of seat & Disc : Renewable
Trim : Stainless Steel (AISI 410)
Pressure Rating : PN 40
Hydraulic Test Pressure : Body 76.0 Kg/cm², Seat 50.6 Kg/cm²
Working Temperature : Max. 425^oC
End details : Flanged ends as per DIN 2545 Raised Face



Model No. : PV-202

Product Name : Cast Steel Globe Valve, Right Angle Pattern
Product Standard : BS 5160 / DIN 2401
Product Description : Outside Screw & Yoke type Rising Stem
Body & Bonnet : Cast Steel as per ASTM A 216 Gr. WCB
Type of seat & Disc : Renewable
Trim : Stainless Steel (AISI 410)
Pressure Rating : PN 40
Hydraulic Test Pressure : Body 76.0 Kg/cm², Seat 50.6 Kg/cm²
Working Temperature : Max. 425^oC
End details : Flanged ends as per DIN 2545 Raised Face



Model No. : PV-203

Product Name : Cast Steel Horizontal Lift Check Valve
Product Standard : BS 5160
Product Description : Bolted Cover
Body & Bonnet : Cast Steel as per ASTM A 216 Gr. WCB
Type of seat & Disc : Renewable
Trim : Stainless Steel (AISI 410)
Pressure Rating : PN 40
Hydraulic Test Pressure : Body 76.0 Kg/cm², Seat 50.6 Kg/cm²
Working Temperature : Max. 425^oC
End details : Flanged ends as per DIN 2545 Raised Face



Model No. : PV-204

Product Name : Cast Steel Horizontal Lift Check Valve
Product Standard : BS 5160
Product Description : Bolted Cover, Right Angle Pattern
Body & Bonnet : Cast Steel as per ASTM A 216 Gr. WCB
Type of seat & Disc : Renewable
Trim : Stainless Steel (AISI 410)
Pressure Rating : PN 40
Hydraulic Test Pressure : Body 76.0 Kg/cm², Seat 50.6 Kg/cm²
Working Temperature : Max. 425^oC
End details : Flanged ends as per DIN 2545 Raised Face



CAST STEEL
VALVES & BOILER
MOUNTINGS

KRANTI

IBR
APPROVED

KRANTI
VALVES

AN ISO 9001:2008 CERTIFIED COMPANY

(WITH TEST CERTIFICATE IN FORM III-C)

Model No. : PV-205

Product Name : Cast Steel Parallel Slide Blow off valve

Product Description : Rack & Pinion Operated with key

Body & Bonnet : Cast Steel as per ASTM A 216 Gr. WCB

Type of seat & Disc : Renewable

Trim : Stainless Steel (AISI 410)

Spring : Stainless Steel as per AISI 304

Box Key & Pinion : Carbon Steel as per IS 1367

Hydraulic Test Pressure : Body 49.3 Kg/cm², Seat 32.8 Kg/cm²

Working Temperature : Max. 400°C

End details : Flanged ends as per BS 10 Table "J" Flat face



Model No. : PV-206

Product Name : Cast Steel Sleeve Packed Water Level Gauge

Product Description : With automatic Shut off Device in water arm

Upper & Lower arms : Cast Steel as per ASTM A 216 Gr. WCB

Product Type : Right or Left hand type

Drain valve : Cast Steel as per IBR 73 to 80

Sleeve : Moulded Graphite

Hydraulic Test Pressure : Body 49.3 Kg/cm², Seat 32.8 Kg/cm²

Working Temperature : Max. 400°C

End details : Flanged ends as per BS 10 Table "J" flat face



Model No. : PV-301

Product Name : Cast Stainless steel thermodynamic steam trap

Product Description : Moving disc with inbuilt integral strainer

Body & Bonnet : Stainless Steel as per AISI 420

Disc : Stainless Steel as per AISI 420

Hydraulic Test Pressure : Body 63.3 Kg/cm²

Working Pressure : Max. BOP 31.6 Kg/cm²

Working Temperature : Max. 400°C

End details : Screwed female BSP Taper threads



Model No. : PV-302 (UNDER DEVELOPMENT)

Product Name : Cast Steel Ball Valve Class-150

Product Description : Three Piece Design

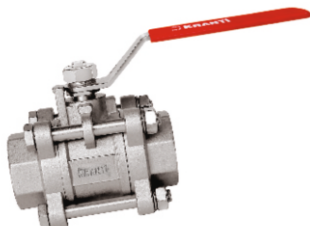
Body & Connector : Cast Steel

Ball & Stem : Stainless Steel

Hydraulic Test Pressure : Seat 40 Bar

Working Temperature : Max. 425°C

End details : Screwed female BSP Taper threads



(WITH WORK'S TEST CERTIFICATE)

Model No. : 401

Product Name : ISI Marked Cast Iron Sluice Valve as per IS 14846

Product Description : Non Rising Spindle / Rising Spindle

Body & Bonnet : Cast Iron as per IS 210 FG 200

Handwheel : Cast Iron as per IS 210 FG 200

Stem : Stainless Steel as per IS 7604

Wedge Nut & Wedge Ring : Bronze as per IS 318 Gr. LTB 2

Body Seat Ring : Bronze as per IS 318 Gr. LTB 2

Gasket : Rubber as per IS 638 Type B

Test Pressure : Body 2.4 Mpa, Seat-1.6 Mpa

End Details : Flanged Ends as per IS 1538



Model No. : PV-402

Product Name : ISI Marked Cast Iron Non Return Valve as per IS 5312

Product Description : Bolted Cover, Swing Type

Body, Cover & Hinge : Cast Iron as per IS 210 FG 200

Body Seat Ring : Bronze as per IS 318 Gr. LTB 2

Disc Type : Cast Iron as per IS 210 FG 200

Disc Face : Rubber as per IS 638 Type B

Gasket : Rubber as per IS 638 Type B

Test Pressure : Body 2.4 Mpa, Seat-1.6 Mpa

End details : Flanged ends as per IS 1538



Model No. : PV-403

Product Name : ISI Marked Cast Iron Butterfly Valve as per IS 13095

Product Description : Short Wafer Type

Type of Product: Lever / Gear Operated

Disc Type : S.G. Iron Disc / S.S. 304 Disc / S.S. 316 Disc

Test Pressure: 1.0 / 1.6 Mpa

Liner : EPDM as per IS 5192-1

Upper & Lower Stem : Stainless Steel as per IS 7604

Dowel Pin : Carbon Steel as per BS 1574

End Details : Compatible to insertion between flanges of BS 10 Table D, E, F, ASA Class-150, 300 IS 6392 Table 17



Model No. : PV-404

Product Name : Cast Iron Dual Plate Check Valve

Product Description : Wafer Type Non Return Valve

Body : Cast Iron as per IS 210 FG 200

Liner : Rubber

Flap : S.G. Iron / S.S. 304

Hook : Carbon Steel as per IS 1367

Test Pressure: 1.6 Mpa

End Details : Compatible to insertion between flanges of BS 10 Table D, E, F, ASA Class-150, DIN PN-16



(WITH WORK'S TEST CERTIFICATE)

Model No. : PV-405

Product Name : ISI Marked Cast Iron Ball Valve as per IS 9890-1981

Product Description : Screwed in Bonnet, 2 Piece Design

Body : Cast Iron as per IS 210 FG 200

Stem : Stainless Steel as per IS 7604

Gland Packing : PTFE as per BS EN 12086-1

Ball : S.S. 304 Ball / S.S 316 Ball

Ring : PTFE as per BS EN 12086-1

Lever : Carbon Steel as per IS 1367

Test Pressure : Body 2.4 Mpa, Seat-1.6 Mpa

End Details : Screwed Female Ends



Model No. : PV-406

Product Name : ISI Marked Cast Iron Ball Valve as per IS 9890-1981

Product Description : Bolted end Connector, 3 Piece Design

Body : Cast Iron as per IS 210 FG 200

Stem : Stainless Steel as per IS 7604

Gland Packing : PTFE as per BS EN 12086-1

Ball : S.S. 304 Ball / S.S 316 Ball

Ring : PTFE as per BS EN 12086-1

Lever : Carbon Steel as per IS 1367

Test Pressure : Body 2.4 Mpa, Seat-1.6 Mpa

End Details : Flanged ends ASA CL-125



Model No. : PV-407

Product Name : Cast Iron "Y" Type Strainer

Product Description : Screwed In Bonnet with S.S 304 perforated Screen Sheet

Body : Cast Iron as per IS 210 FG 200

Strainer : S.S. 304 Mesh / Brass Mesh

Gasket : Steam Jointing Sheet as per 2712 Gr. W/3

Test Pressure : 21.1 Kg/cm²

End Details : Screwed Female Ends



Model No. : PV-408

Product Name : Cast Iron "Y" Type Strainer

Product Description : Bolted Bonnet with S.S 304 perforated Screen Sheet

Body : Cast Iron as per IS 210 FG 200

Strainer : S.S. 304 Mesh / Brass Mesh

Gasket : Steam Jointing Sheet as per 2712 Gr. W/3

Test Pressure : 21.1 Kg/cm²

End Details : Flanged Ends to Bs10 Table 'F'





(WITH WORK'S TEST CERTIFICATE)

Model No. : PV-409

Product Name : Cast Iron Single Air Valve as per IS 14845

Product Description : Bolted Cover

Body & Cover : Cast Iron as per IS 210 FG 200

Cowl : Cast Iron as per IS 210 FG 200

Float : Timber Core with Rubber Coating

Small Orifice : Stainless Steel Rubber Coated as per IS 7604

Hex Nipple : Carbon Steel as per IS 1367

Test Pressure : 16 Kg/cm²

End details : Screwed Male end as per IS 554



Model No. : PV-410

Product Name : Cast Iron Double Air Valve as per IS 14845

Product Description : Bolted Cover, with or without isolation Valve

Body & Cover : Cast Iron as per IS 210 FG 200

Cowl : Cast Iron as per IS 210 FG 200

Float : Timber Core with Rubber Coating

Small Orifice : Stainless Steel Rubber Coated as per IS 7604

Large Orifice : Cast Iron Rubber Coated as per IS 210 FG 200

Test Pressure : 16 Kg/cm²

End details : Flanged end as per IS 1538



Model No. : PV-411

Product Name : Cast Iron Kinetic Air Valve as per IS 14845

Product Description : Bolted Cover

Body & Cover : Cast Iron as per IS 210 FG 200

Cowl : Cast Iron as per IS 210 FG 200

Float : Timber Core with Rubber Coating

Small Orifice : Stainless Steel Rubber Coated as per IS 7604

Large Orifice : Cast Iron Rubber Coated as per IS 210 FG 200

Test Pressure : 16 Kg/cm²

End details : Flanged end as per IS 1538



Model No. : PV-412

Product Name : Bronze Compact Type Pressure Reducing Valve

Product Description : Screwed in Bonnet, Piston Type

Body & Piston : Bronze as per IS 318 Gr. LTB 2

Upper & Lower Bonnet : Bronze as per IS 318 Gr. LTB 2

Adjusting Screw : Bronze as per IS 318 Gr. LTB 2

Disc : Rubber as per IS 5192

Spring Main & Lower : Spring Steel as per EN 47 Gr. B

Test Pressure : 21.1 Kg/cm²

Set Pressure : 0.6kg/cm² to 7kg/cm²

End details : Screwed Female Ends as per IS 554





AN ISO 9001:2008 & ISO 14001:2004 CERTIFIED CO.

"Intellectuals Solve Problem Genius Prevent them"

AMAN ENGINEERING WORKS

C 54-55 Focal Point Extension, Jalandhar-144 004 India
Ph.: +91 181 2603614, 15, 16 Fax.: +91 181 2603617
E-mail.: krantimeters@gmail.com, Web.: www.amanenggworks.com

PARAS VALVES PVT. LTD.

49, Aman Nagar Industrial Area, Jalandhar-144 004 India
Ph.: +91 181 2292364, 65, 66 Fax.: +91 181 2292367
E-mail.: paras.valves@gmail.com, Web.: www.parasvalves.com